

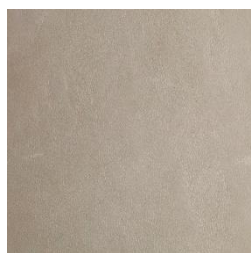


VESUVIOUS WOVEN

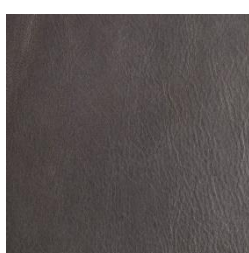
ALMALEATHER

| | |
|---------------------------------|---|
| Product | Vesuvius Woven |
| Application | Upholstery, Wall covering, Handrails, Handles and accessories |
| Origin | European |
| Hide Type | Full cowhide |
| Average Hide Size | 5.1 sq m (55.0 sq ft) |
| Average Largest Cut Size | 1700mm vertical 1500mm horizontal |
| Thickness | 1.1 - 1.3 mm |
| Weight | 58 gms / sqft |
| Grain | Corrected |
| Texture | Smooth |
| Tannage | Full Chrome |
| Dye | Aniline |
| Finish | Buttery semi aniline smooth finish |
| Industry | Contract, Residential and Hospitality |
| Maintenance | For cleaning and maintenance, use of Alma Leather cleaner and moisturizer is recommended. |
| Certifications | Passes BS 5852 source 0 & 1 |
| Minimum Order Quantity | 1 hide |
| Custom | Custom colours are available on request. |
| Special services | Perforation, Laser cutting, Embroidery is available on request |

COLOUR BOOK



Arena



Caliza



Cesped



Ceti



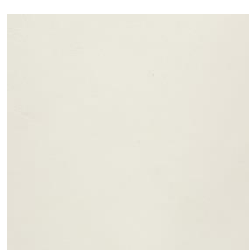
Cinclus



Clay



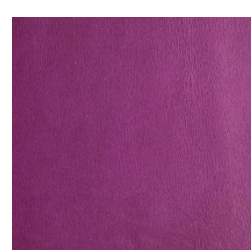
Cognac



White



Forestal



Hermand



Tropical



Ibiza



Khaki



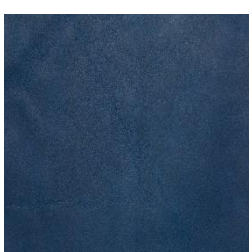
Light Grey



Lipstick



Mango



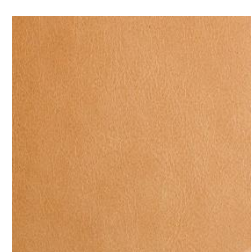
Marejada



Mauve



Merula



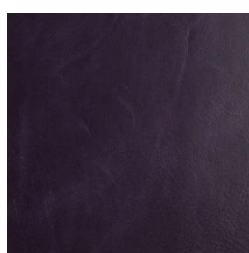
Naevia



Niebla/Mint



Oxblood



Plum



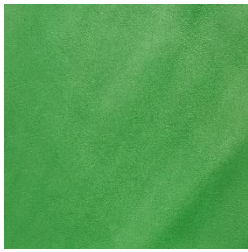
PrussianBlue



Rogue



Ruberta



Shamrock



Tarsiger



Taupe



Torquata



Espresso