

**FARO**

---

**ALMA**LEATHER

<b>Product</b>	Faro
<b>Application</b>	Upholstery, Wall covering, Bags and Accessories
<b>Origin</b>	European
<b>Hide Type</b>	Cow nubuck
<b>Average Hide Size</b>	5.1 sqm (55.0 sqft)
<b>Average Largest Cut Size</b>	1700mm vertical   1500mm horizontal
<b>Thickness</b>	1.0 – 1.2 mm
<b>Weight</b>	109gms per sqft
<b>Grain</b>	Corrected
<b>Texture</b>	Nubuck embossed grass cloth pattern
<b>Tannage</b>	Full Chrome
<b>Dye</b>	Aniline
<b>Finish</b>	Nubuck
<b>Industry</b>	Contract, Residential, Hospitality
<b>Maintenance</b>	Nubuck aniline leathers are cleaned by simple dusting off or brushing with a foam or soft brush, wet cleaning is not recommended.
<b>Certifications</b>	Passes BS 5852 - 4 Part 1 source 0 and BS 5852 – 5 Part 1 and Source 1
<b>Minimum Order Quantity</b>	1 hide
<b>Custom</b>	Custom colours are available on request
<b>Special Services</b>	Perforation, Laser cutting, Embroidery is available on request

# COLOUR BOOK



Ash



Parchment



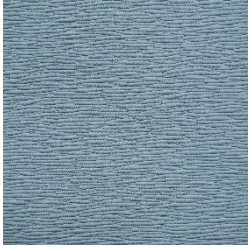
Blush



Rose



Lilac



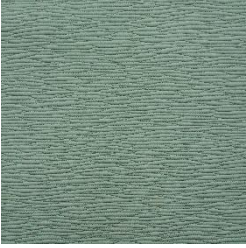
Pale Blue



Quartz



Sage



Mint



Grey



Tan



Iris



Moss



Aubergine



Faro - Basil



Navy